



Page 1

Agenda Item 4

# South LAC Community Engagement

Beauchief & Greenhill • Gleadless Valley • Graves Park • Sharrow & Nether Edge

# Contents

About our Engagement Activities

Section 1

Who we spoke with

Section 2

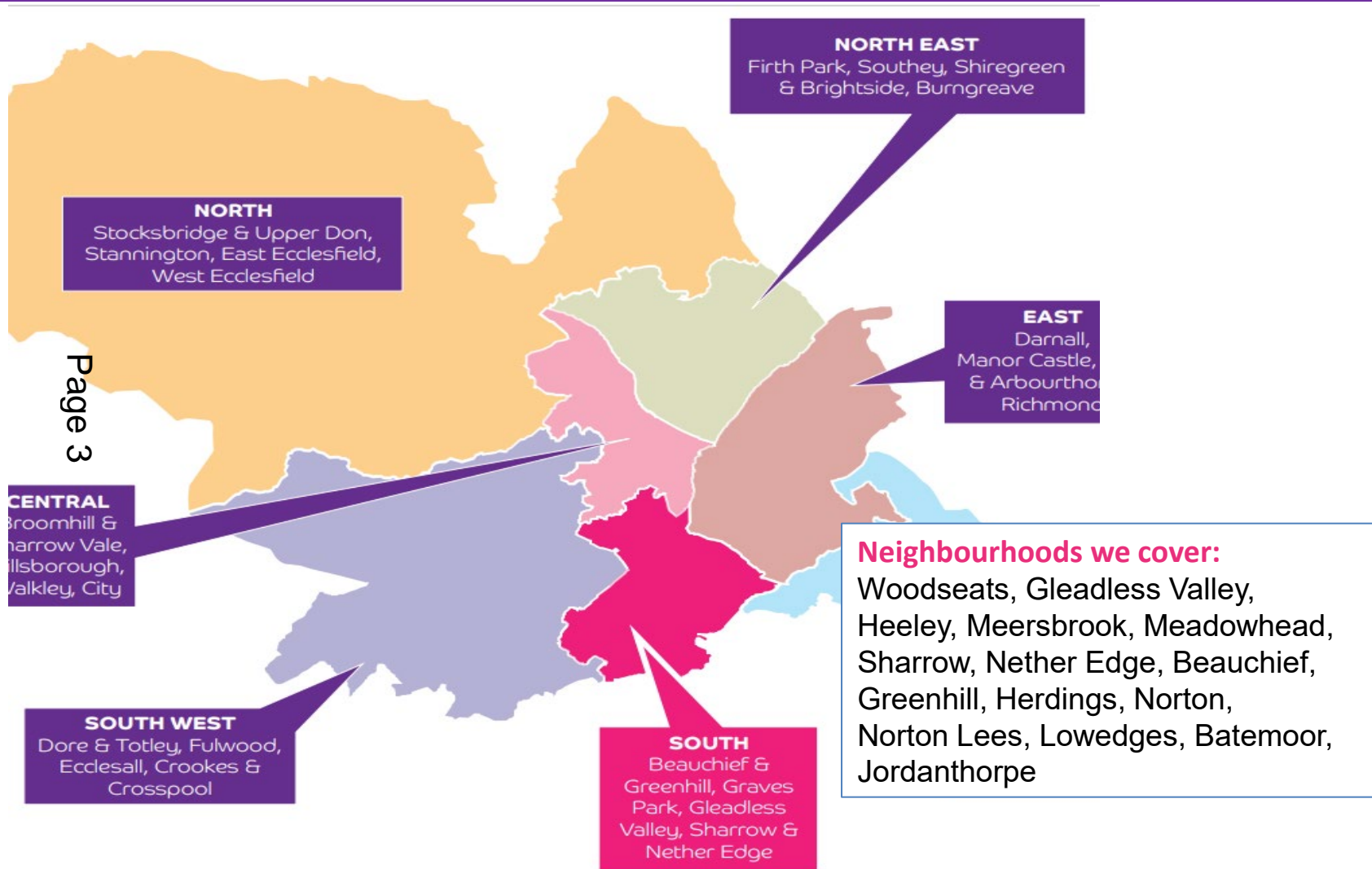
Page 2  
Feedback

Section 3

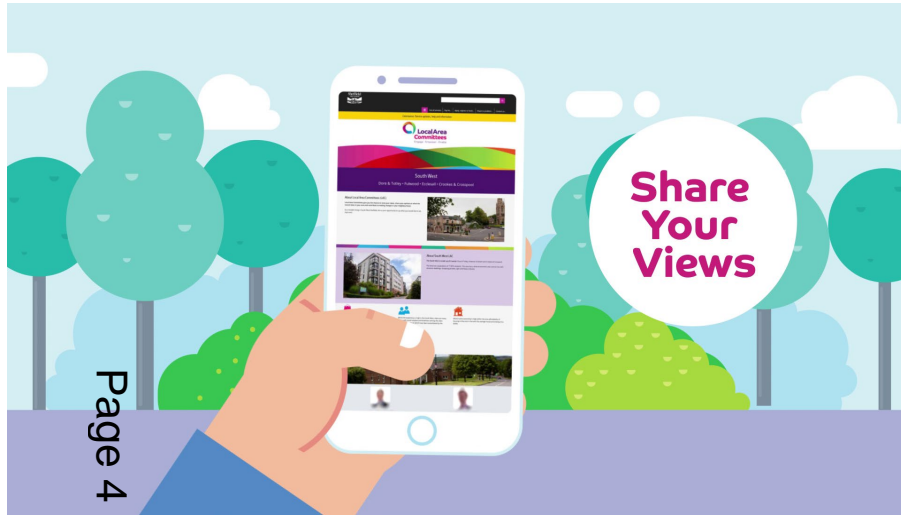
Key themes

Section 4

# About Our Engagement Activities



# About Our Engagement Activities



## **In Person Surveys / Conversations**

Led by 7 local VCFS organisations  
665 responses

## **Local Businesses**

Elected Members & LAC Team spoke to local businesses in Sharrow, Woodseats and Gleadless Valley

## **Online Citywide Survey**

31<sup>st</sup> August to 31<sup>st</sup> October 2021  
Paper copies also made available  
976 responses

## **South LAC Public Meeting**

Held in Gleadless Valley Methodist Church

## **Drop ins at Libraries**

Supported by LAC Team

## **Sheffield Equality Partnership**

Citywide targeted work with communities less likely to have their voice heard

# About Our Engagement Activities



Page 5

We have spoken with over 1,800 people so far.....

## Ward where respondents live (surveys only)

|                       |     |                       |     |
|-----------------------|-----|-----------------------|-----|
| Beauchief & Greenhill | 21% | Gleadless Valley      | 26% |
| Graves Park           | 15% | Sharrow & Nether Edge | 37% |

# Who We Spoke With.....

## Sexual Orientation

**7%** respondents identified as lesbian, gay or bisexual

## Gender Identity

**1%** respondents identified as trans (online survey only)

## Ethnicity

White British **74%**  
Black, Asian, Ethnic Minority **20%**  
White (Non - British) **3%**



## Age

Page 6

Under 20  
**5%**

Working Age (20-50)  
**45%**

Age 50+  
**49%**



## Religion/belief

**34%** no religion/belief  
**3%** Religious (online survey only)



**19%** have a disability or long term condition

## Sex



**36%** Male  
**60%** Female  
**1%** Non Binary

## Caring status

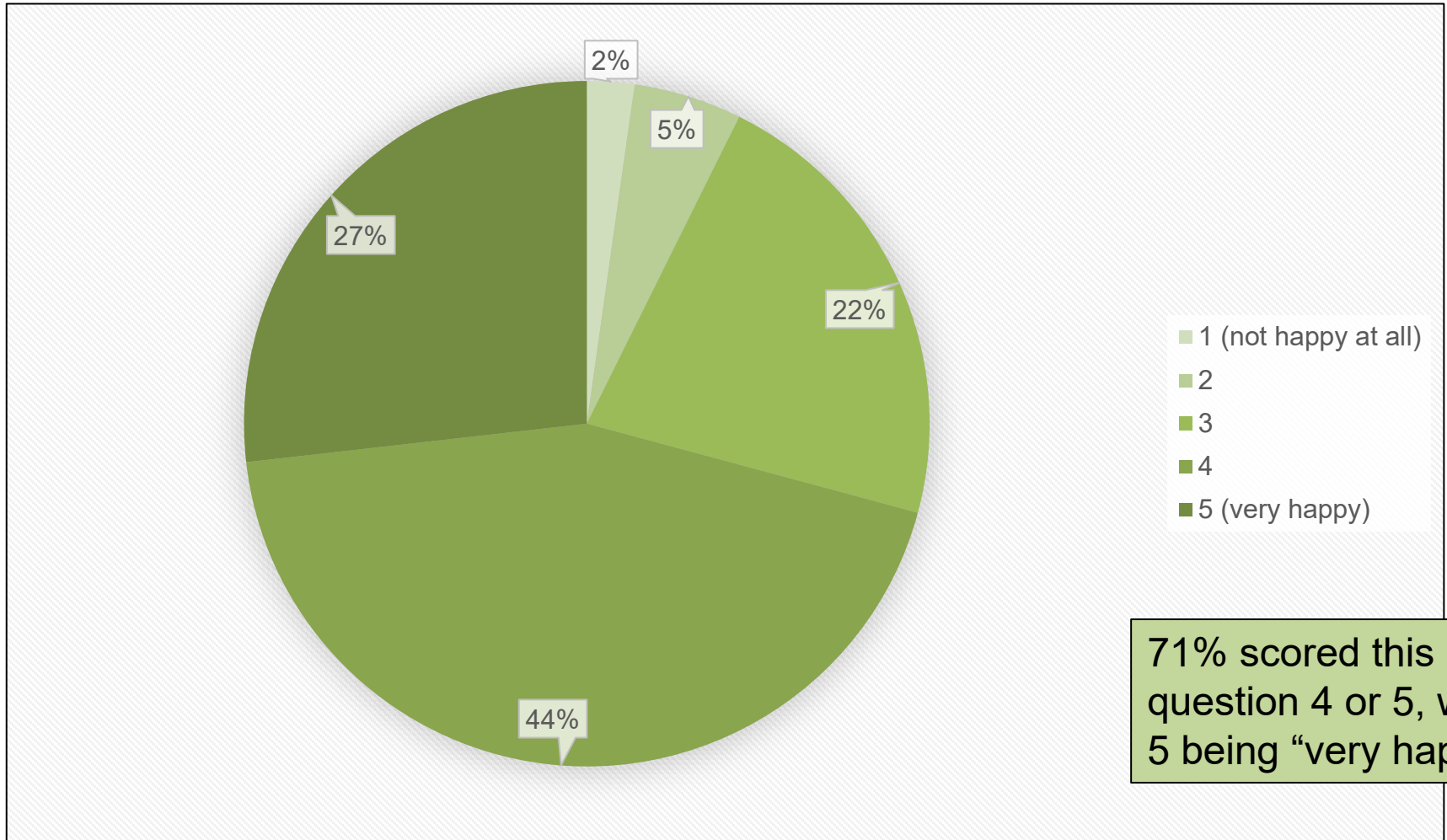
**18%** said they were unpaid carers

## Tenure

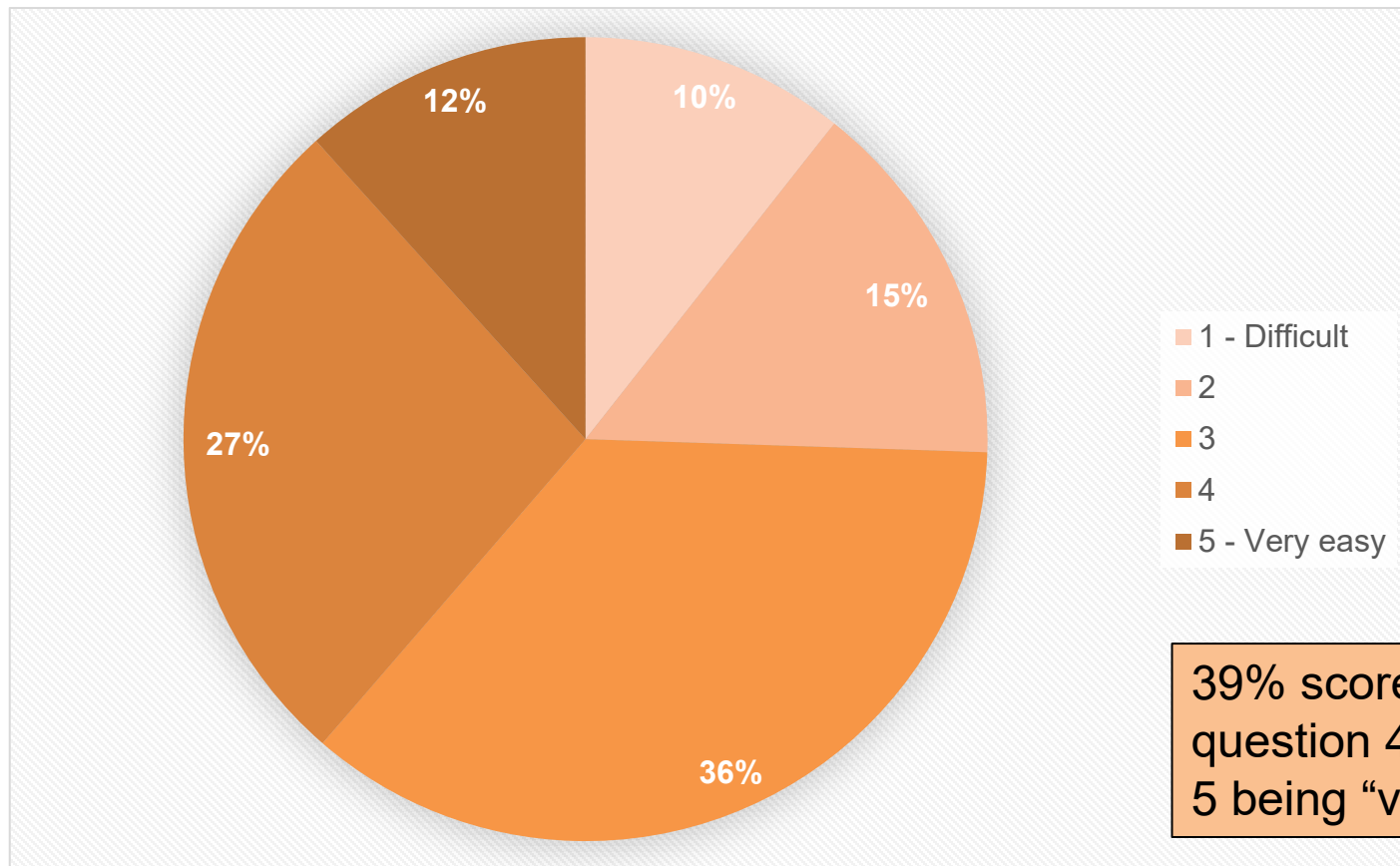


**77%** are Homeowners  
**9%** Rent from the council  
**1%** Rent from other social landlord  
**8%** are Private Renting  
**2%** living with family (Online Survey only)

## How happy do you feel with your local area where you live?

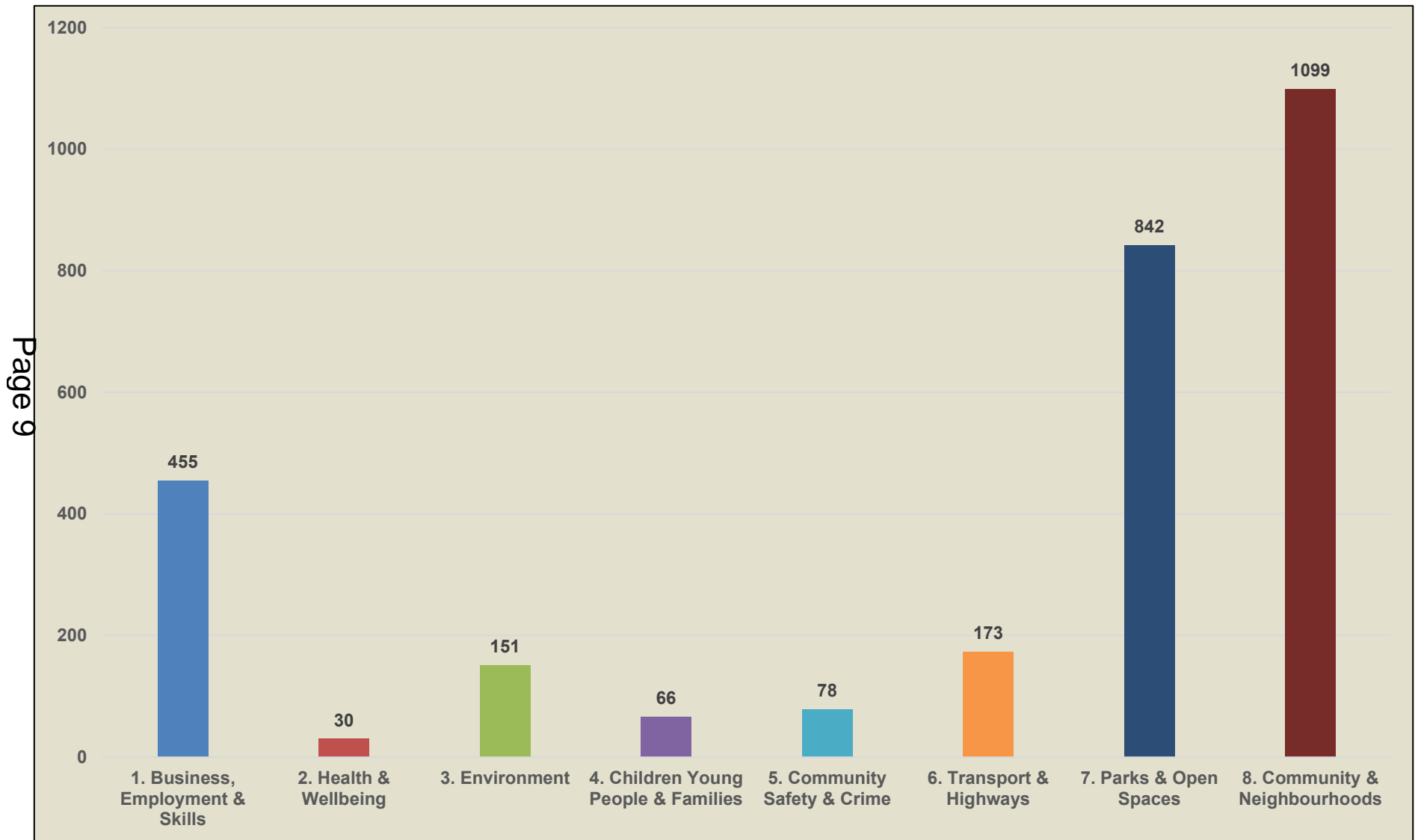


How easy is it find out about news in your local area? e.g. events / activities





# Feedback: Key Themes - Likes



# Feedback: Key Themes - Likes



## **Sense of Community**

Over 550 positive comments from people about their community, this included comments about community networks, diversity, neighbours and friends, family, community events and activities and community spirit

## **Crime & Community Safety**

Over 70 comments about people feeling safe in their area or it having low crime levels.

## **Environment**

Over 100 people commented that they liked the trees and street trees.

## **Public Transport**

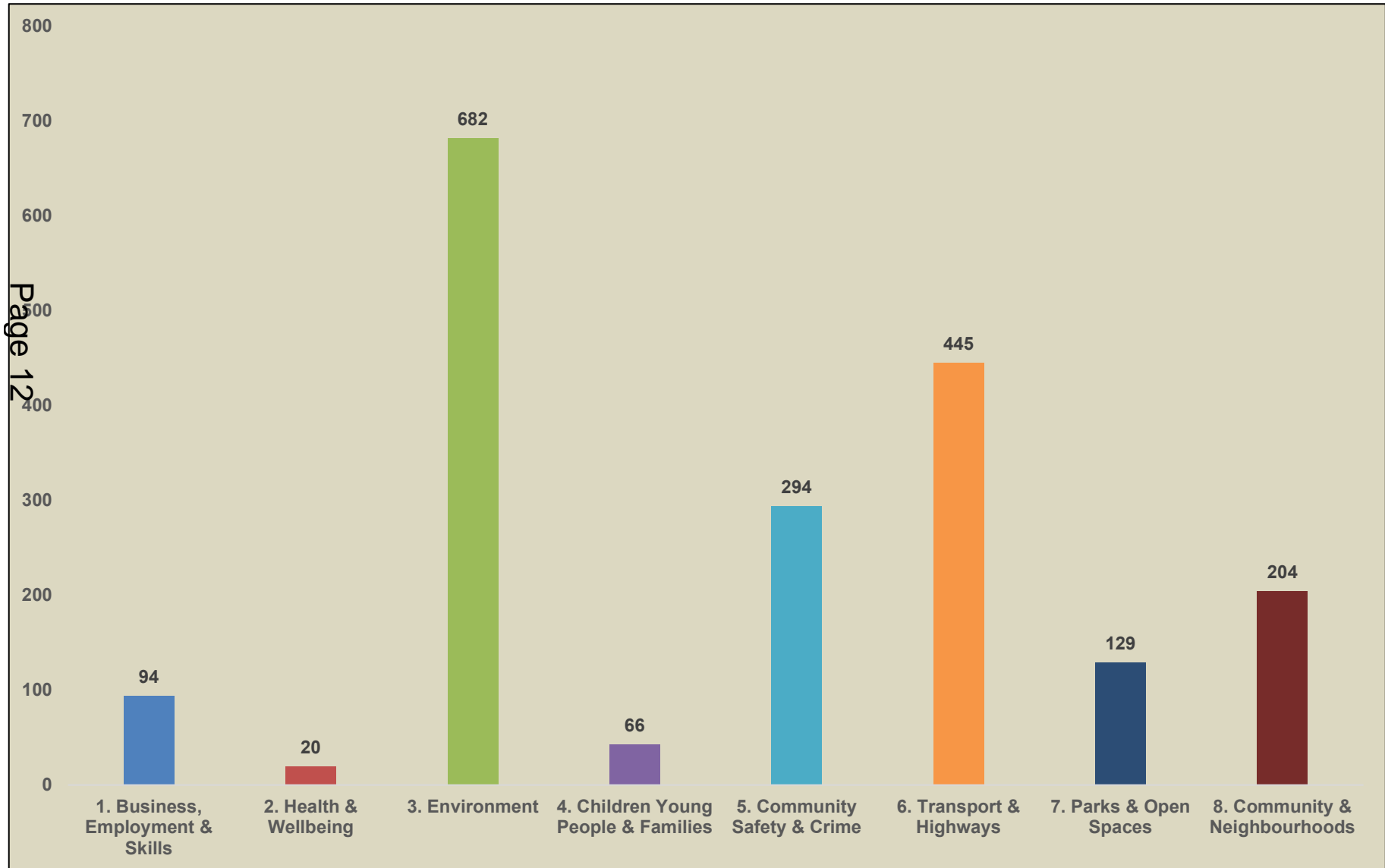
Over 100 comments in relation to buses and also trams and train in terms of proximity and routes.

## **Parks & Open Spaces**

Over 280 comments about parks, including quality and location, with lots of mentions of Graves, Meersbrook and also Millhouses Parks.



# Feedback: Key Themes - Improvements



# Feedback: Key Themes - Improvements

## Environment

Top concerns raised in order of priority:

- Litter
- Trees (inc. maintenance / replanting)
- Street Cleaning & Maintenance
- Climate / Clean Air / Carbon Footprint
- Street scene - Footpaths & Lighting
- Bins (residential / commercial)
- Dog Fouling

Litter was the most prominent issue with over 130 comments.



## Transport & Highways

Top concerns raised in order of priority:

- Parking
- Traffic Calming
- Public Transport - Tram, Train, Bus etc.
- Speeding
- Cycle Routes
- Potholes / resurfacing
- Active Travel - Running / Walking etc

Parking and traffic calming both received over 200 comments, with public transport receiving over 170 comments and speeding over 120.

# Feedback: Key Themes - Improvements



## Crime & Community Safety

Page 10  
Top concerns raised in order of priority:

- Crime
- Police Presence & Patrol
- ASB
- Off-Road Bikes

Crime was the most prominent concern with over 70 comments followed by Police Presence & Patrol with over 50.

## Community & Neighbourhoods

Top concerns raised in order of priority:

- Lack of Local Amenities
- Community & Voluntary Groups (more activities)
- Community / Neighbourhood (ASB / Housing stock)
- Lack of Community Assets / facilities
- More festivals / Celebrations & Community Days

Lack of local amenities was the most prominent concern with over 30 comments.

# Feedback: Key Themes - Improvements

## Parks & Open Spaces

Top concerns raised in order of priority:

- Parks
- Playgrounds & Play Areas
- Green & Open Spaces

Both parks and playgrounds and play areas received over 30 comments.

Page 15

## Children, Young People & Families

Top concerns raised in order of priority:

- Youth Clubs, Activities & Provision
- Family Activities & Groups

Youth clubs, activities and provision received over 50 comments



## Business, Employment & Skills

Top concerns raised in order of priority:

Type of Shops & Businesses (increase independent shops / diversity)

- Business and Economy (including local shopping offer)
- Empty shops
- Training, Skills & Jobs

Type of Shops & Businesses received over 40 comments

# Emerging Themes Based on our Engagement



---

Environment



---

Transport & Highways



---

Community Safety & Crime



---

Community & Neighbourhoods



---

Parks & Open Space



---

Business, Employment & Skills



# Some Considerations & Caveats

- **Sample size** – it is still a small sample of the South LAC population
- **Underrepresentation** - Some neighbourhoods and groups unrepresented e.g. those who don't own their own home
- **Gaps** - some very important issues are less prevalent through this engagement e.g. health and wellbeing, children and young people, poverty
- **Variance** – there is some very significant variance across areas / neighbourhoods
- **Evidence** - what else do we know?



This page is intentionally left blank